



BELTS BY TIMKEN

Cotton Drive[®] Timing Belts

Synchronous Drive Belt



Cotton Drive[®] belts are special 1" pitch timing belts designed for use on cotton gin incline cleaner machines. Cotton Drive belts are uniquely constructed for optimum performance in this harsh, abrasive application.

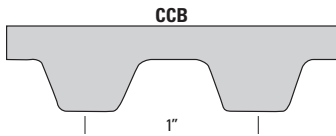
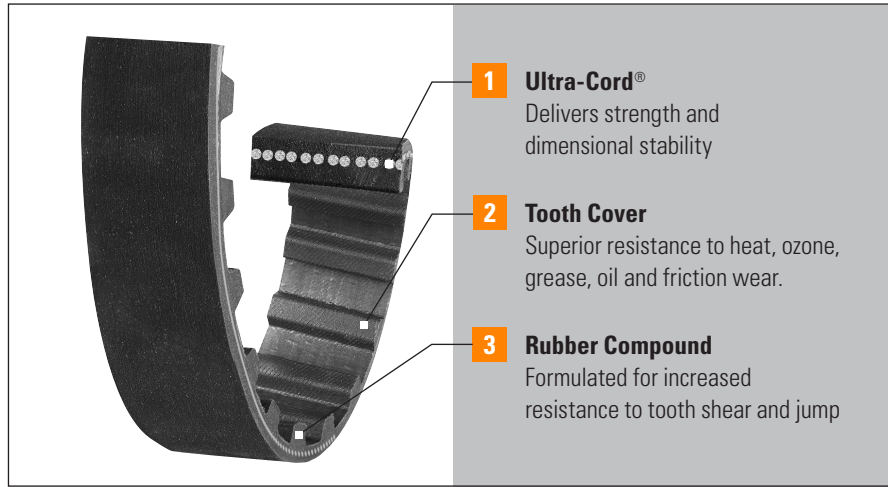


www.carlislebelts.com



Cotton Drive® Timing Belts & Sprockets

- Custom designed for exact OEM replacement on cotton gin drives
- Innovative engineering incorporates Ultra-Cord® technology for increased shock resistance
- Special rubber compounds are formulated for increased belt life
- Resistant to heat, ozone, grease, oil and friction wear

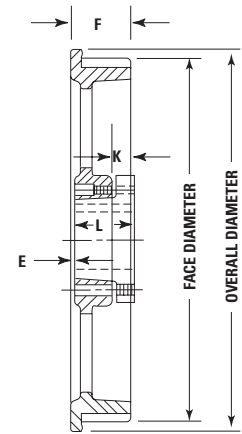


Part Number Example: **61CCB142** = **61** **CCB** **142**
 Pitch Length (inches) Cotton Cleaner Belt (1" tooth pitch) Drive Center Distance (inches)

Cotton Drive® Belt Part Numbers

Part Number	Pitch Length (in)	Top Width	Number of Teeth	Weight (lbs)
61CCB142	61.07	1.5	60	2.00
63CCB165	63.00	1.5	63	2.10
63CCB165-2-1/2*	63.00	2.5	63	3.50
64CCB170	63.95	1.5	64	2.20
65CCB175	64.95	1.5	65	2.30

*Non-stock item. Minimum order quantity and/or extended lead times may apply. Contact customer service for availability.



Cotton Drive® Sprocket Part Numbers

Part Number	Number Of Grooves	Face Diameter	Overall Diameter	Type	Bushing	E	F	K	L	Weight (lbs)	
21CCP	21	1.5	60	7-3/16	bushed	SK	1-1/16"	1-15/16"	5/8"	1-7/8"	11.5
30CCP	30	1.5	63	10	bushed	SK	1-1/16"	1-15/16"	5/8"	1-7/8"	16.5
32CCP	32	2.5	63	10-13/16	bushed	SK	1-1/16"	1-15/16"	5/8"	1-7/8"	18.5

Note: The 32-groove sprockets must be used with the 61CCB142 and are not interchangeable with other sprockets and belts.

TIMKEN

The Timken team applies their know-how to improve the reliability and performance of machinery in diverse markets worldwide. The company designs, makes and markets high-performance mechanical components, including bearings, gears, chain, belts, couplings, and related mechanical power transmission products and services.

www.carlislebelts.com

Stronger. By Design.