

POWER TRANSMISSION

Product Guide



///iMOTION
Australia



For the past 100 years, customers have been visiting over 114 of our locations across Australia. These workshops, branches and service centres are a fixture in the Australian industrial landscape, whether as BSC, CBC, Hardy Spicer, SiL, SpecFast, AIP, CRAM or any of the other businesses owned by Motion Asia Pacific. Now, all these brands are integrated as part of Motion Australia.

Motion Australia delivers a world-class customer-first approach to everything we do. This has firmly established our businesses as the leader in the market, providing excellence and expertise in industrial products, solutions and services.

Our engineering and design capabilities are second-to-none. With our state-of-the-art in-house workshops, we offer end-to-end design, production, and remediation capabilities, which are unmatched across Australia.

We are invested in our people, systems, and processes; and are proud to keep our customers in motion, every day of the year.

CONTENTS

COUPLINGS, BACKSTOPS & DRIVES	REXNORD, FALK	4
ELECTRIC MOTORS	TECO	5
GEAR BOXES & VARIABLE SPEED DRIVES	BONFIGLIOLI	6
MOTORS & GEARED MOTORS	BONFIGLIOLI, NORD, RADICON	7-10
BELTS	GATES	11
INDUSTRIAL V-BELTS & TIMING BELTS	TIMKEN, MEGADYNE	12-14
BELTS, CHAIN, COUPLINGS & PULLEYS	FENNER	15
FLUID COUPLINGS & BRAKES	TRANSFLUID	16
CLUTCH & BRAKE	TWIFLEX, WICHITA, EATON, COMINTEC, FORCE CONTROL	17
SHAFT – HUB LOCKING DEVICES	MAV	18
GEARBOXES, COUPLINGS & UNIVERSAL JOINTS	DODGE, TRANTORQUE	19
COUPLINGS, UNIVERSAL JOINTS & PULLEYS	TIMKEN, MAINA, CURTIS	20
CHAIN & TENSIONER DEVICES	ROSTA, ZMC, CAN-AM, REXNORD, EWART, JOHN KING	21
ROLLER CHAIN	DIAMOND	22
BELTS & O RINGS	FENNER DRIVES	23
BRAKES & COUPLINGS	VULKAN	24
DRIVESHAFT & COMPONENTS	HARDY SPICER, SABRE AG, WALTERSCHEID	25-26
TRACTOR ATTACHMENT SYSTEMS	WALTERSCHEID, SABRE AG	27-28

COUPLINGS, BACKSTOPS & DRIVES

**FALK STEELFLEX® GRID COUPLINGS**

General purpose couplings requiring no periodic maintenance when lubricated with FALK supplied Long Term Grease (LTG) at installation.

- Torque ratings up to 932,000Nm
- 5 year warranty

**REX® THOMAS® DISC COUPLINGS**

A practical alternative to lubricated and elastomer couplings.

- No lubrication
- No wearing parts
- No backlash - torsionally rigid
- Comprehensive range of types and sizes
- Torque ratings up to 320,920Nm

**FALK WRAPFLEX® ELASTOMER COUPLINGS**

- Non-lubricated, simple to install
- Maximum operational flexibility
- Effectively dampens shock loads
- Easily accommodates misalignment
- Available in 3 types and 9 sizes
- Torque ratings up to 15,800Nm

**FALK ORANGE PEEL GUARDS**

The practical protective coupling guard.

- Meets OSHA, ASME and ANSI job-site safety requirements
- "Trim and Fit" to suit your coupling profile
- Polyethylene and metal types
- Available in 6 types - MCG, CCG, CFCG, SCG, VCG and LSG
- Low initial cost, low lifetime cost
- 3 year heavy duty warranty

**FALK LIFELIGN® GEAR COUPLINGS**

The low-cost, longer lasting answer to both small and large capacity coupling requirements.

- Triple-crowned for maximum capacity
- Larger bores and higher power ratings
- 20 types and 28 sizes
- Torque ratings up to 8,190,000Nm

**FALK TRU-HOLD® BACKSTOPS**

For virtually any applications where materials need to be moved up steep grades.

- Single, tandem or multiple units
- Torque ratings from 4,068Nm up to 1,012,847Nm
- Over-running speeds from 1 to 2,800rpm

**FALK QUADRIVE®**

Helical Shaft-Mounted Drives "Easiest on, easiest off... guaranteed"

TA Taper bushing design ensures ease of drive removal and prevents damage to both drive and/or driven equipment.

- Torque ratings up to 36,547Nm
- Power ratings up to 224kW
- 3 year heavy duty warranty

**FALK V-CLASS™**

When uptime matters, trust the Falk V-Class™

- Power range 11 - 7457 kW
- Torque range up to 341,000 Nm
- Ratio ranges Parallel shaft - Double reduction 5.0 - 28.0
- Triple reduction ratio 28.0 - 160.0
- Right angle - Double reduction 6.3 - 12.5
- Triple reduction ratio 12.5 - 124.0
- Available with hollow, taper bush or solid output shaft

**REX® VIVA™**

The Rex Viva coupling is a unique general purpose coupling ideal for use in industrial applications.

- No lubrication
- No wearing parts
- Polyurethane membrane
- Torsionally flexible
- Adjustable to meet ISO, DIN and ANSI shaft spacing specifications to 300mm BSE
- Torque ratings up to 6,270Nm
- Taper bush hub to shaft fitting or straight bore available

**REXNORD OMEGA ES**

- Split-in-half flex element for simplified assembly
- Torsionally soft flex element cushions shock loads
- Interchangeable hubs allow for reduced inventory
- No lubrication - no wearing parts
- Adjustable to meet ISO, DIN & ANSI shaft spacing
- Torque ratings to 4,460 Nm
- Available with taper bush hub to shaft fitting or straight bore

**MAX-ALLOY**

Light Weight. Economical cost, reliable, functional and versatile.

- 415 Volt 3-Phase 50 Hz
- Aluminium frame motor
- Available in frame sizes D56-D160, 0.18kW to 18.5kW
- Multi-mount construction 0.75kW and larger
- Squirrel cage rotor
- MEPS efficiency
- Top mount terminal box
- Multimount 0.75kW and larger
- Class F insulation
- Protection to IP55
- Teal Green in colour

**TECO MAX E3 PREMIUM SEVERE DUTY**

The heavy duty machine, superior features and performance for all industries.

- 415 Volt 3-Phase 50 Hz
- TECO renowned grease relief system
- Suitable for 55°C ambient at rated output
- Cast Iron frame motor
- Available in frame sizes D71-D355, 0.18kW to 185kW
- Integral foot design with side mount terminal box
- Squirrel cage rotor
- High efficiency
- Side mounted terminal box
- Class F insulation
- Service factor 1.15
- Protection to IP66
- TECO blue in colour
- Also available as Exe (Zone 1 gases) and ExnA (Zone 22 Gases)

**TECO MAX E3 MINING**

The ultimate machine, with the features and performance desired by the worlds top mining enterprises.

- 415 Volt 3-Phase 50 Hz
- TECO renowned grease relief system
- Suitable for 60°C ambient at rated output
- High efficiency
- Cast iron frame motor
- Available in frame sizes D71-D355, 0.18kW to 450kW
- Integral foot design with side mount terminal box
- Squirrel cage rotor
- High efficiency
- Side mounted terminal box
- Class H insulation
- Service factor 1.2
- Protection to IP66
- X15 orange pint finish
- Also available as Exe (Zone 1 gases), ExnA (Zone 22 gases) and ExtD Zone 21 & 22 (dusts)

**TECO TE3**

Three phase induction motors are a range of high quality, totally enclosed fan cooled.

- (TEFC), Squirrel Cage Induction motors, designed, manufactured and tested to the latest
- International and Australian Standards (eff3)
- From 0.75kW to 315kW with either IP55 or IP66 protection
- Cast Iron frame with TOP Mount terminal Box

GEAR BOXES & VARIABLE SPEED DRIVES

**3/H SERIES – COMBINED GEARBOXES**

Bonfiglioli's 3/H gearboxes combine the high technology, performance and efficiency of planetary gearboxes with the robustness, quality and reliability of bevel helical gearboxes.

Numerous combinations cover a wide range of applications and offer:

- Gear ratios from 1:100 to 1:1000
- Rated power up to 980 kW
- Reference torque up to 1200 kNm

**HDO - BEVEL HELICAL GEAR REDUCER**

The new bevel helical gear reducer series optimises superior performance with compact dimensions and flexibility.

- Torque range: 28200 - 210000 Nm
- Gear ratios: 5.6 - 400
- Mounting: foot, flange & shaft mounting

**RAN - BEVEL GEARS**

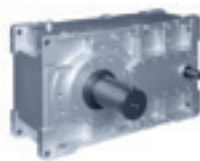
The units of the RAN - Bevel gears series are designed to fit the purpose of transmission laid out in right angle setting. Easy to fit and almost maintenance-free.

- Torque range: 3 Nm - 3.000 Nm
- Mechanical rating (n1= 1400 min-1): 0.15 kW - 91 kW
- Gear ratios: 1.0 - 7.4
- Shaft arrangement: single or double shaft projection

**TA SERIES - SHAFT MOUNTED REDUCER**

The TA series - Shaft mounted reducer has long established itself in the industry until becoming a best seller for the quarry and mine applications where absolute reliability and low maintenance are key factors.

- Torque range: 150 Nm - 16.000 Nm
- Mechanical rating (n1= 1400 min-1): 1,1 kW - 156 kW
- Gear ratios: 5.0 - 31.5
- Output: keyed hollow shaft

**HDP - PARALLEL SHAFT GEARBOX**

Torque ratings consistently high, gear ratios in close progression, numerous mounting options along with compact dimensions will ease the engineering of any application.

- Torque range: 5000 - 210000 Nm
- Gear ratios: 7.1 - 500
- Mounting: foot, flange, shaft mounting

**V - MECHANICAL VARIABLE SPEED DRIVE**

The renovated V - Mechanical variable speed drive series features a brand new speed setting mechanism that optimizes the operation, extending the lifetime of the core parts, and allowing the speed variator to run cooler and smoother than ever before.

- Max. to min. speed setting: 5.2 times, ∞ reduction through a differential unit
- Mechanical rating (n1= 1400 min-1): 0.18 kW - 9.2 kW
- Additional helical reduction: iN = 2.5 - 6.3

**S2U - PLUG & PLAY FREQUENCY INVERTER**

Intuitive and simple but powerful and effective. Also available in our extensive range is SYN10, Active, Agile, Active Cube and ACU8.

- Power range (S2U 230): 0.25 - 3.0 kW
- 1-Phase 200 - 240V / 50 - 60Hz (+10, -15%)
- Type of control: V/F control with automatic torque compensation function
- Overload capacity: 150% for 60s
- Switching frequency: 1-16 kHz
- Enclosure: IP20
- EMC filter: standard integrated A class filter

**VF-EP/W-EP - GEAR MOTOR FOR HOSTILE ENVIRONMENTS**

Wormgears and motors are also available in the enhanced protection "EP" configuration (gear motor for hostile environments), featuring food grade specifications and extra corrosion protection.

- Stainless steel hollow shaft
- Stainless steel mounting hardware and tag
- Oil seals loaded with stainless steel spring
- Sealed gearcase (unvented)
- Unused tapped holes closed with button plugs
- Four draining holes on motor DE and NDE shield
- Motor protection IP 56



VF/W – UNIVERSAL WORM GEAR MOTOR

Absolute flexibility is given by the wide choice of several mounting options, shaft configurations and motor interface, all offered as standard.

- Torque range: 13 Nm - 7100 Nm
- Mechanical rating (n1= 1400 min-1): 0.04 - 75 kW
- Gear ratios: 7 - 10000



A – HELICAL BEVEL GEAR MOTOR

The A Helical bevel gear motor series is the first product to prove equally good in regard to efficiency and versatility within a highly competitive context, both performance and price-wise.

- Torque range: 100 Nm - 14.000 Nm
- Mechanical rating (n1= 1400 min-1): 0.22 - 150 kW
- Gear ratios: 5.4 - 1715



F – SHAFT MOUNTED GEAR MOTOR

Lightweight and performing, an F unit is the dependable drive for all material handling applications.

- Torque range: 140 Nm - 14.000 Nm
- Mechanical rating (n1= 1400 min-1): 0.17 - 125 kW
- Gear ratios: 6.4 - 2099



C – HELICAL GEAR MOTOR

Top torque density, product variety, extremely wide speed choice, great compactness and price effectiveness make the C series the unparalleled line of helical gear motors and speed reducers.

- Torque range: 45 Nm - 12.000 Nm
- Mechanical rating (n1= 1400 min-1): 0.08 kW - 213 kW
- Gear ratios: 2.6 - 1481



BE – HIGH EFFICIENCY IE2 AC MOTORS & BX – PREMIUM EFFICIENCY IE3 AC MOTORS

The IEC BE (eff2) & BX (eff3) motors comply with IEC 600034-1-2-2007 & IEC 600034-30-1 standards from the International Electrotechnical Commission.

- Power range (4 pole): 0.75kW – 22.0kW
- Frame sizes: 80B – 180L
- Number of poles: 2, 4, 6
- Mounting options: Foot B3, Flange B5 and B14



300 – PLANETARY GEAR MOTOR

Compact, and yet extremely powerful, are the units of the 300 Planetary gear motor series. Their planetary drive train makes them the ideal choice for all the severe duty applications where shock loadings and impacts are more the rule than the exception.

- Torque range: 1000 - 1287000 Nm
- Mechanical rating (n1= 1400 min-1): up to 450 kW
- Gear ratios: 3.4 - 5234

MOTORS & GEARED MOTORS

**HELICAL GEAR UNITS**

- Foot or flange-mounted
- Long life, low maintenance
- Optimum sealing
- Unicase housing

Sizes	11
kW	0.12 – 160
Nm	10 – 26,000
i	1.35:1 – 14,340.31:1

**HELICAL WORM GEAR UNITS**

- Foot mounted, flange mounted or hollow shaft mounted
- Hollow or solid shaft
- Unicase housing

Sizes	6
kW	0.12 – 15
Nm	94 – 3,058
i	4.40:1 – 7,095.12:1

**PARALLEL SHAFT GEAR UNITS**

- Foot mounted, flange mounted or hollow shaft mounted
- Hollow or solid shaft
- Compact design
- Unicase cast-iron housing

Sizes	15
kW	0.12 – 200
Nm	110 – 100,000
i	4.03:1 – 6,616.79:1

**BEVEL GEAR UNITS**

- Up to 95% efficiency
- Foot mounted, flange mounted or hollow shaft mounted
- Hollow or solid shaft
- Unicase cast-iron housing

Sizes	11
kW	0.12 – 200
Nm	180 – 50,000
i	8.04:1 – 13,432.68:1

**INDUSTRIAL GEAR UNITS**

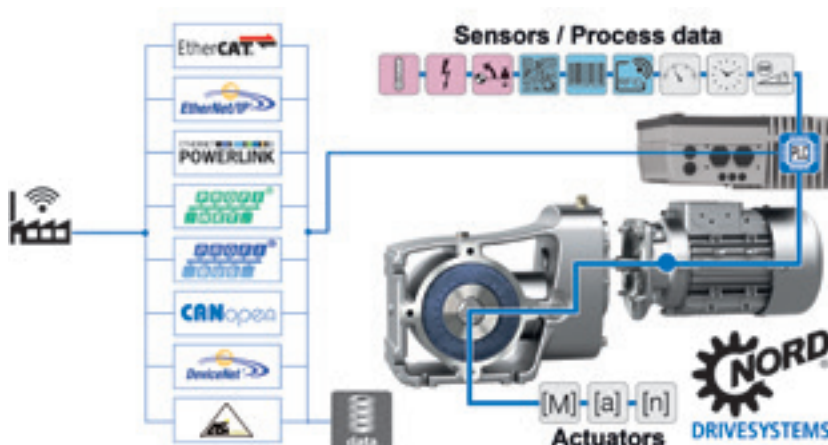
- All bearing points and sealing surfaces are machined in a single operation
- No separating joints in the housing, no sealing surfaces subject to torque
- High-precision axis alignment for quiet running
- Long life, low maintenance
- Gear ratio range 5.54 to 400:1 with the same foot dimensions
- Parallel axis and right-angled gear units

Sizes	9
kW	2.2 – 3,000
Nm	25/30/40/50/75/ 110/150/190/250
i	5.54:1 – 1,600.00:1

**NORDBLOC.1 - IN-LINE HELICAL GEAR UNITS**

- Foot or flange-mounted
- Die-cast aluminium housing
- Unicase housing
- Industry standard dimensions

Sizes	8
kW	0.12 – 37
Nm	55 – 3,300
i	2.10:1 – 456.77:1

**SK200E DECENTRALIZED FREQUENCY INVERTER**

- Energy-saving function
- Integrated "Posicon" positioning control

Sizes	4
V [V]	1 ~ 115V 1 ~ 230V 3 ~ 230V 3 ~ 400V
P [kW]	0.25 – 22



SMOOTH UNIVERSAL WORM - 2 STAGE HELICAL BEVEL - IN-LINE HELICAL

Modern gear units need to be robust, compact, powerful, inexpensive - and above all, light: This is an advantage, because weight causes costs, especially if the gear unit has also to be transported during movement cycles. As a result, aluminium alloy has become firmly established as a material for gear unit housings in many areas.



2-STAGE BEVEL GEAR UNITS

The new 2-stage bevel helical gear units with optimised performance are an innovative NORD design made from high-strength aluminium alloy. Thanks to the washdown version, the new 2-stage NORDBLOC.1 bevel gear units are especially suitable for applications in the food industry. Further fields of use include conveyor belts, lifting gear or warehouse systems.



UNIVERSAL SI AND SMI WORM GEAR UNITS

UNIVERSAL SI and SMI worm gear units from NORD DRIVESYSTEMS provide a high power density and are extremely compact. They feature quiet torque transfer. Thanks to their simple and effective structure they take up considerably less space than other types of gear unit. The gear units are available in SI and SMI versions (with smooth closed surfaces).



WASHDOWN/HYGIENIC MOTOR (HM/HMT)

Unique Washdown Design - HM & HMT Model Motors Manufactured from Corrosion Resistant Aluminium Alloy NORD Smooth Surface Motors are ideal for applications in food processing, bottling, pharmaceuticals, poultry and meat processing, bakeries, snack foods, dairy, marine and coastal areas, waste water, damp and wet areas and areas where sanitation and cleanliness is essential.



NORD IE5+ SYNCHRONOUS MOTOR

Efficient, hygienic and compact. The new generation of IE5+ motors are especially suitable for reducing operating costs in wash-down applications.

- Latest generation permanent magnet synchronous motor (PMSM)
- Power ranges from 0.35 to 1.1 kW in a single size
- EC B14 flange mounting, IEC B5 flange mounting, NEMA C-face flange mounting, direct mounting to all NORD gear units
- Continuous torque of 1.6 to 4.8 Nm in a single size
- Speed ranges from 0 to 2,100 rpm
- Optionally with NSD tupH surface treatment and IP69K protection class
- Optionally motor-integrated encoder; optionally integrated mechanical brake

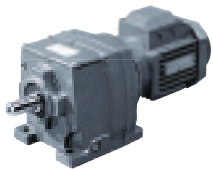


NSD/NSD (TUPH) SEALED SURFACE CONVERSION PROTECTION

Products treated with NSD TupH are ideal for extreme ambient conditions and demanding requirements.

- Easy to clean surfaces
- Resistant to acids and alkalis (entire pH range)
- No infiltration of corrosion, even if damaged
- Cannot flake
- Corrosion-resistant and prevents contact corrosion
- Alternative to stainless steel
- Complies with FDA Title 21 CFR 175.300
- Free from chromates

GEARED MOTORS

**IN-LINE GEARED MOTORS**

- 12 sizes
- Input power up to 90 Kw (121Hp)
- Output torque up to 11,000 Nm (97,500 lb.in)
- Gear ratios 8:1 for single reduction 70:1 for double reduction, 250:1 triple reduction and 16,200:1 for combined units

**SHAFT MOUNTED GEARED MOTOR**

- 11 sizes
- Input power up to 110 Kw (147 Hp)
- Output torque up to 16,500 Nm (146,000 lb.in)
- Gear ratios are available 100:1 for double reduction and 5,600:1 in combined units

**HELICAL WORM GEARED MOTOR**

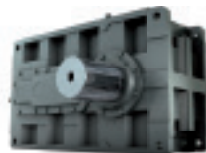
- 8 sizes
- Input power up to 45 Kw (60Hp)
- Output torque up to 10,000 Nm (88,500 lb.in)
- Gear ratios 250:1 for a double reduction and 60,000:1 in combined units

**HELICAL/BEVEL GEARED MOTOR**

- 9 sizes
- Input power up to 90 Kw (121 Hp)
- Output torque up to 12,300 Nm (109,000 lb.in)
- Gear ratios 160:1 in three stages, 10,000:1 in five stages and 36,000:1 in six stages

**SERIES A WORM REDUCER**

- 12 sizes
- Single and double reduction
- Output torque up to 104,000 Nm
- Ratios from 5:1 to 70:1 in single reduction and 4,900:1 in double reduction
- Solid & hollow output shaft available to 190 mm
- Larger & special units available upon request

**HEAVY DUTY GEAR REDUCERS**

Heavy duty gear reducers with split gear case, incorporating three stage high integrity sealing designed for easy maintenance.

- Power ratings range up to 1,500 kw
- Torque range up to 162,00Nm.
- Available with gear ratios 6.3:1 in two stages, 18:1 to 80:1 in three stages, 71:1 to 315:1 in four stages and up to 70,000:1 in combined stages.

**HEAVY DUTY WORM GEAR**

The high quality design and engineering of the ER worm gear range makes the product an ideal solution for the most arduous of industries and applications:

- Underdriven ER-U
- Overdriven ER-O
- Vertical ER-V
- Available in 4 Sizes with worm gear centre 10 inch to 17 inch

**MECHANICAL WORM GEAR**

Mechanical worm gear screw jack with trapezoidal lifting screw available with translating lifting screw or lifting nut.

- 8 standard sizes
- Capacities up to 1000 kN.
- Lifting speed up to 2.4 m/min (40 mm/s)
- Double speed with two-start lifting screw
- Standard lifting screw length up to 6 m

**SERIES J SHAFT MOUNTED SPEED REDUCERS**

Series J Shaft Mounted Speed Reducers are high quality products, submitted to intense quality control and manufactured with the highest precision.

- 19 types up to 600 kW, 57000 Nm
- High efficiency
- Long gear and bearing life
- Wide range of standard accessories
- Easy to mount
- Easy to service, due to standard components

BELTS

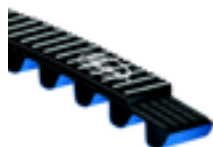
**SYNCHRONOUS DRIVE BELTS**

Available in the following types:

- ISO 5296 - MXL, XL, L, H, XH and XXH
- PowerGrip® HTD® - 3M, 5M, 8M, 14M and 20M
- PowerGrip® HTD® - 2MGT, 3MGT, 5MGT, 8MGT and 14MGT
- Twin Power® and Long Length belts also available
- Power Grip GT4 - 8 MGT & 14 MGT

**POLY CHAIN® GT® SPROCKETS**

- Precise design produces positive, press fit to shaft
- Smaller, narrower sprockets save shaft space, keep the load closer to bearing and extend life of reducer
- Keep overhung load below manufacturers recommendation
- Precision manufactured and static balanced
- Bored to suit a taper bush or in pilot bore construction
- Custom sprockets made to suit your requirements

**GATES POLY CHAIN® GT® CARBON™ BELTS**

- Maintenance free drive
- Outlasts roller chain 4-to-1
- Accommodates the use of backside idlers
- No lubrication required
- Stainless steel sprockets and taper-locks available for washdown applications
- 400% greater capacity than HTD belts

**POLY CHAIN® CARBON™ VOLT™ BELTS**

- Static conductive version (meets ISO9563)
- Same high capacity as standard construction Gates Poly Chain® GT® Carbon™ Belts
- Ideal for hazardous environments (e.g. oil & gas, flour and sugar plants)

**QUAD-POWER® 4 BELTS**

- Raw edge cogged construction
- Temp range -50°C – +130° C
- Fibre loaded EPDM compound withstands heat, ozone, sunlight & better cord support
- Up to 50% higher power rating compared to wrapped belts
- Increased efficiency by 3% over wrapped belts
- Reduce drive maintenance
- Match free to Uniset & V80 matching system

**INDUSTRIAL V-BELT DRIVES**

- Excellent performance/cost ratios, across the range.
- These premium range V-belts are the ideal choice for most power transmission applications.
- Constructed with high tech materials such as EPDM, Gates industrial V-belts are designed to withstand today's demanding applications, outperforming and outlasting competitive products.

**PREDATOR™ BELTS**

Predator™ belts are the most robust V-belts ever designed. Developed for the toughest applications and environments, Predator™ V-belts prey on maintenance and devour downtime. The best V-belt solution to belt drive problems available today. Aramid cords easily handle shock loads and excellent for clutching applications.

Predator™ Singles available in:

- Classical section AP, BP, CP
- RMA narrow section 5VP, 8VP
- ISO narrow section SPB-P and SPC-P

Predator™ Powerbands available in:

- Classical section BP and CP
- RMA narrow section 3VP, 5VP and 8VP
- ISO narrow section SPB-P and SPC-P

INDUSTRIAL V-BELTS

TIMKEN

**GOLD RIBBON® COG-BELT®**

Gold Ribbon's unique construction combines the superior flexing of precision molded cogs with the tenacious gripping power of Raw-Edge sidewalls to provide significantly longer belt life, higher efficiency and horsepower ratings.

FEATURES

- The energy saver
- High performance construction
- 50% longer life
- 30% higher horse-power
- Greater design flexibility
- **chekmate™** Matching

**SUPER II BELTS**

Timken Belts has designed this belt for the toughest, heavy-duty industrial applications. The kind that eat up ordinary wrapped belts. The Super II puts an end to the constant, costly problem of replacing or re-tensioning belts. The secret is the Super II V-Belt's unique construction.

FEATURES

- The "Problem Solver"
- Blows the cover off conventional wrapped belts
- For classical applications
- **chekmate™** Matching

**BLUE LABEL V-BELT**

Timken Belts Blue Label V-Belts are the ideal choice for dependable and economical performance. The special double fabric wrapped cover construction means longer service life. It provides positive flex fatigue characteristics and extends load life capacity. Special rubber compounds give excellent resistance against oils, heat, weather and aggressive environmental conditions.

FEATURES

- The finest wrapped belt in the industry
- Super rated at standard prices
- High performance rubber blend compound
- **chekmate™** Matching.

**POWER-WEDGE® COG-BELT®**

Designed for maximum efficiency at a lower cost. Higher horsepower ratings translate into greater design flexibility – reducing drive costs, space and weight. You need fewer belts. The narrow profile permits reduced drive widths and a considerably smaller drive envelope.

FEATURES

- Higher horsepower rating than conventional belts
- Greater design flexibility
- Longer belt life
- Lower cost
- Less space
- Energy efficient
- **chekmate™** Matching

**XDV® V-BELT**

Timken Belts XDV V-Belts represent the pinnacle for premium FHP applications and provide exceptional service in the harshest environments. They are durable – even when subjected to temperature extremes, high humidity, moisture, grit, oil and grease.

FEATURES

- Shock resistant aramid cord.
- Specially designed.
- Clutching fabric.
- Unique blue cover.
- Engineered for maximum life and performance on tough lawn and garden applications.

**BLUE LABEL POWER-WEDGE® V-BELT**

Timken Belts Blue Label Power-Wedge® V-Belts are the ideal choice for dependable and economical performance in the proven power wedge configuration.

FEATURES

- The finest wrapped belt in the industry
- Super rated at standard prices
- **chekmate™** Matching



BSC Energy Saving Solutions

TIMKEN

**SUPER POWER-WEDGE® V-BELT®**

The Super Power Wedge V-Belts are specifically designed for the toughest drives requiring long lengths. Double wrapped cotton neoprene covers offer greater resistance against harsh environmental conditions and improves wear characteristics. The proven wedge configuration assures stability when heavy shock loads are encountered. Clutching is smooth with no grabbing or jerking delivering the ideal balance between controlled power transfer and slippage.

FEATURES

- Smooth transfer of power
- Greater design flexibility
- Longer belt life
- Lower cos.
- Less space
- **chekMate™** Matching

**DOUBLE ANGLE V-BELT**

Ideally suited for serpentine drives where power needs to be transmitted equally from both sides of the belt. Double-wrapped cotton-neoprene cover is added for excellent resistance to abrasive wear, heat, ozone, grease, oil or dirt. Centrally located cord and special synthetic rubber compounds assure long V-Belt life and smooth, capable horsepower capacity.

FEATURES

- Provides transmission transfer equally on both sides
- Smooth transfer of power
- Engineered for maximum life on serpentine drives

**SUPER VEE-BAND®**

Timken Belts' Super Vee-Band line is specifically designed to handle the toughest industrial applications, including rock crushers, vibrating equipment, saws and pumps.

FEATURES

- Provides cross-wise rigidity for multiple belt drives
- Eliminates belt turnover and whip
- Patented banding process
- Available in a wide range of sizes

**ARAMAX® WEDGE-BAND®**

The Aramax Wedge-Band is designed for extraordinary banded belt strength on the toughest belt drives. Ideally suited for oil field equipment, rock and quarry applications, lumber industry drives and heavy construction machinery. The exclusive Aramax® cord from Timken Belts provides maximum protection against belt breakage due to shock loads.

FEATURES

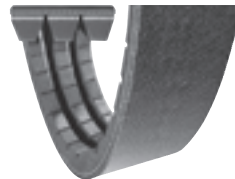
- Super high performance banded belt
- Aramax® cord construction
- Excels on tough oil field, rock, quarry & industrial applications

**VARIABLE SPEED COG-BELT®**

For use with variable speed pulleys to gain a wide range of driven speeds. Provides exact speed control. Same high standard of quality in a replacement belt that Timken Belts provides to the OEM. Raw-Edge sidewalls improve gripping action.

FEATURES

- Smooth running
- Oil & heat resistant
- Long belt life
- Wide selection of sizes

**POWER-WEDGE® COG-BAND®**

The Power-Wedge Cog-Band permanently bonds the individual elements together to assure prematched size and quality. Belt whip and turnover are eliminated. Vibration is dampened. Shock absorbed.

FEATURES

- Eliminates belt whip and turnover
- Higher HP
- Longer life



The Timken Belts Iron Clad Guarantee. We're confident that once you've tried Timken Belts, you'll never be satisfied with anything less.



BSC Energy Saving Solutions

INDUSTRIAL V-BELTS & TIMING BELTS

**GOLD RIBBON® COG-BAND®**

Banded version of "The Energy Saver". Combines the longer life and superior performance of the Gold Ribbon Cog-Belt with the stability of a banded belt. Gold Ribbon's unique construction (combining the superior flexing of precision molded cogs with the tenacious gripping power of rawedge sidewalls) provides significantly longer belt life, higher efficiency and horsepower ratings and opportunities to save time, energy and space.

FEATURES

- Eliminates belt whip and turnover
- 50% longer life
- Higher HP

**CLASSICAL SYNCHRO-COG**

The belt is suitable for a wide range of load capacities and speed ratios. Excellent choice for maintenance-free performance on timing and positive drive applications.

FEATURES

- Trapezoidal tooth profile.
- Molded cogs designed to ensure smooth, positive meshing with sprocket grooves.
- Fiberglass tensile cords resists stretch.
- Nylon fabric tooth cover protects tooth face.

**PANTHER PLUS BELT**

The Panther Plus delivers unequalled performance and the highest power ratings of any rubber timing belt. Panther Plus will outperform chain and gears as well as conventional synchronous drive systems.

FEATURES

- High Torque Capacity
- Lower Installation tensions reduce hub loads
- Reduced noise Levels
- Greater wear & heat resistance
- Smooth operation with backside idlers
- Positive, non slip drive engagement, up to 99% drive efficiency
- Antistatic properties
- Reduce drive widths

**DOUBLE SIDED TIMING BELTS**

The Double sided synchronous belts are specially designed with teeth on both sides providing two driving surfaces in positive drive applications.

FEATURES

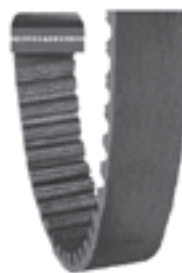
- 100% load capacity on both sides of the belt.
- Moulded cogs to ensure smooth positive engagement with sprocket.
- Excellent resistance to tooth shear and tooth jump.
- Smooth, quiet and maintenance free.

**MEGADYNE SILVER RPP BELT**

The RPP Silver retains the same RPP parabolictooth profile to guarantee an easy upgrade of existing drives.

FEATURES

- RPP profile greater resistance to tooth jump and reduction in noise levels
- Increased load carrying capacity and full compatibility and interchange ability with industry deep tooth sprockets
- A tough nylon fabric tooth cover protects tooth face and improves tooth mesh
- Antistatic properties conforming to BS2050

**MEGADYNE PLATINUM RPC BELT**

The new Platinum belt has been developed using the most innovative material and designs generation.

FEATURES

- Increased power capacity improved flex resistance for longer drive life
- Full functional interchange with all other deep groove profile systems
- Polyamide fabric tooth facing improves tooth shear resistance and torque carrying capacity
- Lower noise characteristics compared to drive systems using steel, polyurethane, etc.
- Wide continuous range of operating temperatures -35°C to +115°C



BSC Energy Saving Solutions



STANDARD CHAIN

- Shot peening of roller and side plates gives increased fatigue resistance
- Ball swaged side plate holes improve finish and combat fatigue failure
- Deep waisted side plates increase effective cross section lowering fatigue
- Case hardened pins extend wear life
- Solid rollers evenly distribute load and increase wear life



SPROCKETS AND PLATEWHEELS

- Manufactured to exacting specifications
- Fully machined 0.45% carbon steel (C45) or high grade, close grain grey iron (GG25)
- Sprocket profiles matched to ISO R606 chain standards for a rolling action which significantly reduces sprocket tooth wear
- Sprockets are blackened to reduce corrosion
- Short-reach bushes on selected sizes - compact hubs



BELTS

- 'PB®' (Precision Build) technology
- Accuracy and stability of length
- 'One Shot' tensioning - no matching necessary
- Meets highest industry standards for static conductivity and nonignition properties
- Heat and oil resistant
- ISO & RMA sections



FENAFLEX™ TYRE COUPLINGS

- Large misalignment capability - 4° angular, up to 6mm parallel and 8mm axial
- Internal load carrying cords are wound in both directions, so there is no problem on reversing drives
- Tyres are available in standard and FRAS (Fire Resistant Anti Static) construction
- Simple visual inspection to aid maintenance
- Taper Lock® and pilot bore flanges



JAW COUPLINGS

- Ease of alignment
- Fail-safe shaft connection
- Range of element materials available including nitrile, urethane and Hytrel
- Pump spacer variant available
- Quick-fit wrap around element available
- Design powers up to 42.2kW available at 1440rpm



HRC COUPLINGS

- Offers the simplest, most straightforward fitting available
- Ease of alignment and fitting using straight edge and machined outside diameters
- Fail-safe design due to interacting dog design
- Accommodates incidental misalignment
- Exceptional performance at low cost
- Power ratings are matched to standard motor sizes



RIGID COUPLINGS

- Taper Lock® fixing as standard
- Peripheral speeds of up to 33m/s available
- 8 sizes in the range
- Vertical assemblies possible in FF design



SMSR POWERPLUS

SMSR PowerPlus offers a rugged design and a 50% increase in the power to weight ratio over older versions.

- 13 sizes in the range
- Torque capacity up to 45,000 Nm
- Three standard bore options
- Bore sizes range from 20 mm to 190 mm
- Taper-Grip bush for easy removal and fitting
- Ratios up to 200:1 with simple belt drive.



FRICTION AND SYNCHRONOUS PULLEYS

- Friction pulleys incorporate dual duty design grooves (ISO 4183) for both V and wedge belts
- Statically balanced to exceed grade G 6.3 (ISO 1940)
- Synchronous pulleys available in both classical Timing and HTD profiles
- Blackened to reduce corrosion



TAPER LOCK BUSHES

- Ease of installation and removal
- Equivalent to a shrink-on fit on uniform load applications, eliminating the cost of a key
- Standard range fits up to 125mm/5" shafts
- Special 4-hole feature for balanced assemblies
- Complete short reach range available, for compact lightweight assemblies
- High grade, close grain iron (GG25) material

FLUID COUPLINGS & BRAKES

**K-CK-CCK FLUID COUPLINGS**

The K series is a constant filling type.

- Smooth starting
- High efficiency
- Power ratings up to 2300 Kw
- Available with single and/or double delayed fill chamber

**KX FLUID COUPLINGS**

The KX series is a fluid coupling with special patented oil circuit.

- Designed to start up high inertia machines driven by electric motors
- Power ratings up to 810 kW at 1500 rpm
- Suitable for use underground

**KSL VARIABLE FILL FLUID COUPLINGS**

The KSL variable fill fluid coupling is designed to overcome difficulties experienced during 'start up' and speed variation.

- Power ratings up to 3300 kW at 1500 rpm
- Soft controlled starting
- Accurate speed variation
- High efficiency

**KPTO VARIABLE FILL FLUID COUPLINGS**

The KPT is a variable fill fluid coupling enclosed into a casing connected to a Diesel engine by means of a SAE housing.

- Suitable for powers up to 1000 kW at 1800 rpm
- Smooth start up, no belt slip
- Shock and overload protection
- High radial load capacity
- Unloaded engine warm up

**OIL ACTUATED POWER TAKE OFF**

HFO clutches have been developed by Transfluid to meet the growing demand for power take offs.

- Power ratings up to 1600 kW
- Speeds up to 2700 rpm
- High torque capacity
- Compact design
- SAE standard interface
- Simplified disc replacement
- CI housing that provides for easy engine installation

**TF DISC BRAKE**

Disc brakes are electro-hydraulic operated negative type. The brake is actuated by means of a spring that, through a suitable system of levers, transmits its amplified force through braking pads to the braking disc.

- Braking capacity up to 19000 Nm with a 1250 mm disc diameter.
- Zinc coated steel frame
- Stainless steel pins
- Asbestos free lining pads, glued to easy-to-replace plates.
- Braking torque scale indicator
- Protection to IP56

**TF DRUM BRAKE**

Drum brakes are electro-hydraulic operated negative type. The brake is actuated by means of a spring that, through a system of levers, transmits its amplified force through braking pads to the braking drum.

- Braking capacity up to 7800 Nm with a 630 mm diameter drum
- Welded steel frame in accordance to DIN 15435
- Manganese phosphate pins
- Light alloy shoes with asbestos free lining glued braking pads
- Braking torque scale indicator
- Protection to IP56

CLUTCH & BRAKE



TWIFLEX MX DISC BRAKE CALIPER RANGE

The MX/SMX calipers may be used with any of the Twiflex series of thrusters and feature a patented link mechanism to ensure uniform pad wear.

- Available in four sizes to suit discs 12.7mm, 25.4mm, 30mm & 40mm
- Braking torque up to 5000 Nm depending on thruster size and capacity
- Pneumatically applied – spring released
- Can be applied mechanically with lever or hand operated



TWIFLEX VKSD DISC BRAKE CALIPER RANGE

The VKSD disc brake caliper is comprised of two halves, or spring modules, and is suitable for use with a minimum disc thickness of 20mm.

- Spring applied – Hydraulically Released
- Braking force dependant on size range from 28kN to 119kN
- Supplied with asbestos free brake pads
- Minimum recommended disc diameter is 1000mm



WICHITA PNEUMATIC CLUTCHES AND BRAKES

Providing the high speed acceleration essential in modern process equipment.

- Slip torque ratings from 72Nm to 1,204,000Nm
- Bore capacities from pilot bore to 430mm
- Comprehensive range of types available



EATON CONSTRUCTING TYPE CLUTCHES AND BRAKES

- Type CB – element assemblies for both clutches and brakes in general power transmission service
- Torque capacities up to 131,000 Nm
- Type VC – element assemblies are designed and built for severe clutching and braking applications
- Torque capacities up to 1,567,000 Nm



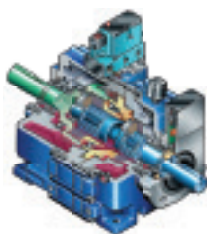
EATON AIR COOLED DISC CLUTCHES AND BRAKES

- Type DBA – disc style brakes are spring applied and air or hydraulically released
- Torque capacities up to 43,050 Nm
- Type DBBS – disc style brakes are spring applied and air or hydraulically released
- Torque capacities up to 630,282 Nm
- Type FHB – spring applied, pressure released, disc style brakes develop equal torque in either direction of rotation
- Torque capacities up to 48,918 Nm



COMINTEC OMC

- Friction type safety devices with torque rating from 1Nm to 800Nm
- Ball safety devices with torque rating from 2.5Nm to 12,000Nm
- Roller safety devices with torque rating from 2.5Nm to 12,000Nm
- Bore capacities from pilot bore to 120mm
- Comprehensive range of types and sizes from stock



FORCE CONTROL CLUTCH AND BRAKE DRIVES

- Flexibility
- Efficiency
- Dependability
- Endurance
- Performance

SHAFT – HUB LOCKING DEVICES

**MAV SHAFT-HUB CONNECTIONS**

The economical and safe alternative to splined, keyed and shrink connection.

- Available in self-centring, non-self centring and self-locking types
- Standard sizes to suit shaft sizes from 14mm to 1000mm
- Imperial sizes available

**MAV STANDARD SERIES 1008**

- High capacity
- Self-centring, self-locking
- Two thrust rings with single taper design
- Tolerances: h7-h11; hub bore tolerance H7-H11
- Shaft and hub bore surface finish $Ra < 3.2 \mu m$
- To suit shaft sizes 70mm to 600mm

**MAV STANDARD SERIES 1061**

- Shaft-hub locking device medium capacity
- Single taper design, self-centring, self-locking
- Fixed hub position during tightening
- Tolerances: Shaft h8; hub bore H8
- Shaft and hub bore surface finish $Ra < 3.2 \mu m$
- To suit shaft sizes 14mm to 400mm

**MAV STANDARD SERIES 4061**

- High capacity
- Self-centering, self locking
- Two thrust rings with single taper design
- Tolerances: h8; hub bore H8
- Shaft and hub bore surface finish $Ra < 3.2 \mu m$
- To suit shaft sizes 70mm to 600mm

**MAV STANDARD SERIES 2005**

- Medium capacity
- Not self-centring, not self-locking (self releasing)
- Fixed axial hub position during tightening
- Two thrust rings with double taper design
- Tolerances: h7-h11; hub bore tolerance H7-H11
- Shaft and hub bore surface finish $Ra < 3.2 \mu m$
- To suit shaft sizes 18mm to 1000mm

GEARBOXES, COUPLINGS & UNIVERSAL JOINTS

**RAPTOR FLEXIBLE COUPLING**

- Natural rubber elastomeric element
- Patented WingLock™ element design
- Longer element life
- Improved vibration and shock damping
- Minimized loads on connected equipment
- Industry leading misalignment capabilities
- Easiest installation of any tire coupling
- Industry leading 5-year warranty
- Close-coupled and spacer designs
- 15 sizes (E2-E140)
- Interchangeable with competitive split-tire elastomeric couplings

**TA (TORQUE ARM) REDUCER**

- Belt driven gear reducer launched in 1949
- Dodge Torque-Arm II introduced in 2000
- Heavy duty tapered roller bearings to withstand shock loads
- Harsh duty seals provide wear resistance to extend operating life
- Patented twin-tapered bushings for easy installation and removal
- Screw conveyor packages available
- Multiple breather accessories to extend operating life
- 12 gear reducer case sizes up to 300kW
- ATEX certified

**MTA (MOTORISED TORQUE ARM) REDUCER**

- Heavy-duty right angle gear reducer
- Compact solution for tight spaces
- Tapered roller bearings to withstand shock load applications
- Premium heavy duty seals to protect internal components
- 3 piece coupling design to easily assembly and disassemble motor from gear reducer
- Patented twin-tapered bushings for easy installation and removal
- Screw conveyor packages available
- Multiple breather accessories to extend operating life
- Available in 7 case sizes up to 75 kW
- ATEX certified

**TRANTORQUE GTR KEYLESS BUSHING**

- Locks and unlocks with the twist of just one nut
- Precise radial and axial adjustment on shaft
- Ideal for timing components
- Trantorque GTR is "self-centering" unlike other cone clamping units - requires no location diameter in components to retain concentricity
- Repair of damaged keyways - just slip Trantorque GTR over the damaged keyway to effect repair
- Eliminates keyways thereby reducing shaft costs
- Allows smaller shaft as the keyway does not weaken the shaftPaint finish is RAL 5010 blue epoxy-polyester

**CONE-RING COUPLINGS**

Cone-Ring couplings are a cost effective solution, with three basic types covering a wide range of possible applications.

- Complete absence of moving parts excepting 'Cone-Rings'
- Replacement Cone-Rings are inexpensive
- Requires no lubrication
- Ability to absorb momentary overload
- Freedom of axial movement without loading the driving or driven components

COUPLINGS, UNIVERSAL JOINTS & PULLEYS

TIMKEN**MAINA GEAR SPINDLES**

For over forty years, Maina has been manufacturing gear spindles for steel and metal rolling mills.

- These remarkable-dimension gear couplings, with fixed or telescopic intermediate shaft, can transmit high torques, with working angles reaching up to 3°.

**MAINA GEAR COUPLINGS**

For over sixty years MAINA has been manufacturing gear couplings of all types and dimensions:

- Standard couplings type go a
- Large-size couplings type go b
- Couplings for special applications type g20, g35 and g60
- Gear couplings for hoist barrels type GTS

**CURTIS UNIVERSAL JOINTS**

The universal solution for design engineers

- 12 sizes
- Single and double joints
- Solid and bored hubs
- Outside diameters 9.5mm to 101.6mm

**QUICK-FLEX COUPLINGS**

- A Quick-Flex coupling, consisting of two coupling hubs, elastomeric insert and cover, offers advantages not offered by other coupling designs such as jaw, grid, gear, chain, tire or disc couplings
- Quick-Flex couplings are direct replacements for virtually all comparably sized couplings in use
- Quick-Flex couplings require no lubrication and are easy to install and maintain

CHAIN & TENSIONER DEVICES



JOHN KING

**ROSTA TENSIONER DEVICES**

- The unique ROSTA multi-purpose rubber suspension elements are designed to provide ultimate versatility - to push, pull or tension
- Considerably extend the service life of your chain drives
- Combine functions of spring, damper and bearing - in one unit
- Can be used for angles or oscillation of up to $\pm 30^\circ$

**ZMC**

ZMC has strong reputation in the conveyor chain offering a combination of manufacturing experience and expertise. The brand is recognised as one of the most advanced conveyor chain producers in the world.

**CAN-AM WELDED STEEL CHAINS**

Available from stock with fully heat treated and/or induction hardened parts.

- Long service-life chains
- Minimum maintenance, reduced downtime

RANGE INCLUDES:

- Mill chain
- Drag chain
- Sharp top chain
- Power transmission chain
- Long link chain
- Malleable and combination chain

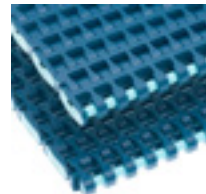
Wide range of attachments available for specific applications

**REXNORD TABLETOP CHAINS**

- A large selection of straight running and side-flexing chains are designed to convey flawlessly even in demanding environments
- Metal or thermoplastic chains are perfect for high strength and high speed applications
- Narrow widths are ideal for multiple strand and variable speed conveyors
- Chains with low backline pressure rollers minimize product damage
- Several chain series couple traditional top plates with roller base chains for increased strength & precision

**EWART HEAVY DUTY DRIVE CHAIN**

- Ideal for slow - moderate speed, high load drives, and provides resistance to shock load
- Outstanding wear resistance and strength
- Excellent fatigue resistance for longer chain life

**REXNORD MATTOP CHAINS**

- Available in assembled-to-width and molded-to-width configurations, engineered to satisfy a wide range of conveyor applications for virtually any product size
- Pins extend the full width of the chain to ensure maximum strength and provide smoother conveying surfaces
- Smaller pitch chains minimize the size of dead plates when transferring products overhead or tail shafts reducing chordal action, helping to eliminate container tipping and jam-ups at transfer point

**JOHN KING CC600 CASE CONVEYOR CHAIN**

- Plastic and malleable iron crate conveyor chain
- Lugs, pushers, closed top styles also available

ROLLER CHAIN

**DIAMOND® ANSI SERIES CHAIN**

Diamond's ANSI Series is a flagship roller chain offering. Manufactured in the United States, this chain has industry-leading wear life and is designed to fit a wide variety of applications. An ideal choice for applications that require a high-end product solution.

**DIAMOND® BRITISH STANDARD CHAIN**

Built to ISO standards for dimensions, interoperability and sprocket fit, Diamond® British Standard chain delivers best-in-class wear performance. An ideal choice for applications that require a high-end product solution.

**SAPPHIRE® SERIES CHAINS BY DIAMOND**

Diamond's Sapphire® Series chains offer value-focused performance. For applications that require a premium product solution balanced with manageable costs, Sapphire Series chain is an ideal choice.

**DIAMOND® AG SERIES CHAIN**

Specifically designed for the Australian agriculture market, Diamond® AG Series chains offer value-focused performance.

**ATTACHMENT CHAIN - LIGHT DUTY**

ASME/ANSI & ISO British Standard, single-pitch and double-pitch chains are available with either attachment link plates or extended pins. Diamond's standard attachment hole sizes are designed to accommodate most common bolt sizes.

Special "made to order" attachments are also available with non standard hole sizes and alternative attachment shapes.



EAGLE POLYURETHANE BELTING AND O RINGS

From light, medium, or heavy duty conveying to custom profiles, Fenner Drives has the right product for your application.

- A wide variety of non-reinforced and reinforced polyurethane belting, non-reinforced quick-connect belting, polyester belting, reinforced can cable, co-extruded belting, and SuperGrip Top belting.



POWERTWIST PLUS LINK BELTING

- Made to any length in seconds
- Available in standard and double sections
- Highly resistant to heat, water, oil, chemicals etc
- Use with Fenner® ISO standard Taper Lock™ pulleys, optionally with RMA pulleys
- Easy to install, rivet-less construction, no tools necessary
- Standard or optional soft back, for conveying applications



NU-T-LINK V-BELTS

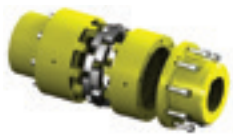
- Highly resistant to extremes of temperature (-40° to +100°C)
- Highly resistant to abrasive materials
- Highly resistant to water, steam, oil and many chemicals
- Link construction enables belts to be fitted easily and quickly, even on drives with limited access - belts can be joined around shafts without dismantling the drive
- Can be made to length on site by adding or removing links
- Minimal stretch means minimum maintenance
- Reduced vibration and belt noise



POWERTWIST WEDGE BELT

PowerTwist Wedge Belts are a long-lasting, easy to install upgrade to rubber wedge belts. They combine the performance of rubber with additional cost-saving benefits:

- Easy to use twist-lock design is made to length by hand, great for captive and fixed centre drive
- High resistance to abrasion and shock loads, and unaffected by oil, grease, water, and extreme temperatures -40 °C to +116 °C (-40 °F to +240 °F)
- Less money tied up in spare endless belts; always have the right belt on hand


VULKAN FLEXOMAX GH SPACER COUPLING

- Radially removable spacer for moving drive/driven end independently
- Removable spacer allows element change in situ
- Cast iron hub, rubber element
- Standard Spacers of:
 - » 100mm
 - » 140mm
 - » 180mm
 - » 250mm
- Nominal Torque ratings 36Nm – 11,700Nm
- Bores up to 150mm


VULKAN FLUID COUPLING

- Constant fill
- Delay chamber
- Extended delay chamber
- Steel construction
- Variable speed scoop control
- Industry standard dimensions available


VULKAN FLEXOMAX GSND COUPLING

- Elastic Element in compression
- 14 sizes
- Torque capacity - 300Nm – 20,025Nm
- Bore sizing from 10 mm up to 200 mm
- Easy & fast installation & replacement of element in situ
- No special maintenance
- No rotational slip of the coupling, thanks to jaws design


VULKAN ELECTRO HYDRAULIC BRAKES

- Failsafe brake
- Service Application
- On-Off Type
- 0,4 sec. Applying time
- Automatic wear pads compensation system
- Worn out pads signal
- Disc or Drum Design available
- No Power Pack required


VULKAN FLEXOMAX GBN COUPLING

- Elastic Element in compression
- 16 sizes
- Torque capacity – 3,600 Nm to 644,000 Nm
- Bore sizing from 15 mm up to 600 mm
- Easy & fast installation & replacement
- No special maintenance
- No rotational slip of the coupling, thanks to jaws design
- **Torque dense – low speed coupling**


VULKAN ELECTRO MAGNETIC BRAKES

- Failsafe brake
- Service & Emergency application
- On-Off Type
- 0,2 sec. Applying time
- Automatic wear pads compensation system
- Worn out pads signal
- Disc or Drum Design Available

DRIVESHAFT & COMPONENTS

**COMPLETE DRIVESHAFTS**

The Hardy Spicer range of complete driveshafts are manufactured and balanced, ready for various applications in automotive, mining and transport industries.

- Complete automotive driveshafts for most makes and models including; Ford, Holden, Toyota, Nissan, Honda, Mazda, Audi, BMW, Mercedes Benz, Volvo, VW and many more
- OEM quality driveshaft assemblies for mining vehicles including Caterpillar, Komatsu, Volvo Construction Equipment, Sandvik, Atlas Copco, Hyundai and many more
- On-Highway transport driveshafts for Volvo, Mack, Iveco, Mercedes, Scania and Isuzu. Other makes also available

Custom-built shaft, complete driveshafts can be manufactured to OEM specifications to suit your needs.

**CENTRE SUPPORT BEARINGS**

The Hardy Spicer range of driveshaft centre support bearings is continuously expanding. Industries include automotive, 4WD, transport, industrial and mining, all with an extensive listing of makes and models.

- Specific make and model applications
- Fluted and solid rubber cushions

Correct fitment for your application available.

**UNIVERSAL JOINTS**

The Hardy Spicer's performance range of universal joints are designed to meet today's tough conditions in all industries and markets.

- Precision ground caps
- Hardened alloy steel for long life durability
- Longer needle rollers for better load distribution
- Triple lips seals to stop water and contaminants
- Teflon thrust pads to prevent metal on metal contact
- Re-lube series for heavy duty service
- Maintenance free option with solid cross for extra strength

**INDUSTRIAL DRIVESHAFTS**

The Hardy Spicer range of industrial heavy duty driveshafts and parts are suitable for the steel, construction, railway, marine and paper industries.

- General industrial applications
- Custom designs for special applications
- Torque range from 195 Nm to 16,300,000 Nm
- Flange sizes 58mm to 1,200 mm

**DRIVESHAFT COMPONENTS**

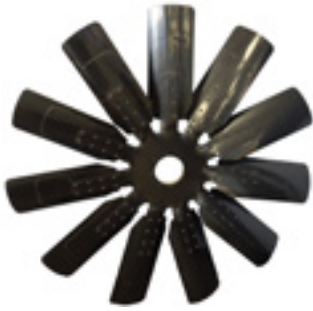
Our Service Centres specialise in driveshaft manufacture, repair and balancing. Service Centres carry a wide variety of driveshaft components to manufacture or repair any driveshaft.

- Universal joints
- Centre support bearings
- Flange yokes
- Slip yokes and spline sets
- Weld yokes
- Transmission and Pinion yokes and flanges
- Components to suit automotive, 4WD, agricultural, industrial, mining, earth moving, transport & marine industries

**PROPELLER SHAFT CV JOINTS AND COUPLINGS**

Main driveshafts in automotive and 4WDs operate at higher speeds than front wheel drive CV shafts. Hardy Spicer has a continuously expanding range of CV Joints, boots and Flexible couplings to suit high speed propeller shaft applications.

- Flexible disc drive couplings
- Propeller shaft CV Joints
- Weld in propeller shaft CV Joint stub ends
- High speed boot kits
- Applications to suit Automotive, 4WD and Industrial



ENGINE COOLING FANS

Our Service Centres have the capabilities to repair, re-blade and balance engine cooling fans for heavy off road and mining applications. A range of new fans are also available off the shelf to reduce downtime.

- New cooling fans available off the shelf
- Cooling fans repaired for mining applications and vehicles including Caterpillar, Komatsu and Liebherr
- Balance capabilities up to 5t and 3m diameter cooling fans
- Replacement of worn and damaged blades
- Crack testing of complete fan and all components



DRIVELINE SYSTEMS

Walterscheid PTO (power take off) drive shaft assemblies are available in Standard and Wide Angle designs to suit a vast array of applications. Walterscheid can offer driveshafts to suit all makes and models from 5HP to 500HP.

- Complete PTO driveshafts fitted with safety covers
- Standard and wide angle PTO shafts
- Standard length shafts or cut to order
- Torque limiters and safety clutches available to suit all shafts
- Extensive range of spare parts available including universal joints, end yokes, drive tube and cover guards



SAFETY CLUTCHES

Walterscheid limiters and safety clutches are an integral part of the agricultural driveline providing safe operations in extreme environments. Walterscheid have a selection of safety limiters for all agricultural applications

- Two and four plate friction clutch
- Overrunning clutch
- Combination friction / overrunning clutch
- Overload clutch
- Cam type cut out clutch
- Shearbolt clutch
- Complete range of spare parts available

Applications include mowers, balers, windrower, tedders, silo filler, rotary tiller, crop sprayer, milling cutter, potato lifter and forage wagons



SABRE AG PTO DRIVESHAFTS

PTO Driveshafts to suit a multitude of applications up to 300HP ready to connect your implement. Suitable interchange replacement options for various spline and drive profile configurations.

- Complete PTO driveshafts with safety covers
- European and North American profile designs
- Various end yokes with different spline and bored connections to suit 540 and 1000rpm applications
- Torque limiting and safety clutch options
- Extensive range of spare parts available



SABRE AG GEARBOXES

Agricultural gearboxes including slasher gearboxes and parts to suit various applications.

- Standard Slasher gearboxes from 30HP to 100HP
- 4 Way Slasher T-Box 90HP @1000rpm
- Compact bevel right angular gearboxes from 3HP to 100HP
- Compact speed multiplier gearboxes
- Slasher kits available (Includes gearbox, PTO shaft, clutch and implement guard)
- Spare parts available

TRACTOR ATTACHMENT SYSTEMS

**TRACTOR ATTACHMENT SYSTEMS**

The Walterscheid three point linkage systems are fitted to the rear of agricultural tractors and are available in Manual or Hydraulic options. The 3-point hitch / TAS connects to the implement using 3 points. Walterscheid offer components for all Categories from category 0 to category 4 hitches.

- Three Point Linkage
- Hydraulic and manual top links
- Lower link stabilisers
- Hydraulic side shifts
- Hook sets for categories 0 to 4
- Linkage accessories
- Extensive range of spare parts available

**TRACTOR HITCH SYSTEMS**

The Walterscheid K80 Hitch system offers many combinations to allow connections and towing, from frames with inserts to drawbars and components. The tractor hitch system pulls the implement from a single point.

- Support frames (Ladders)
- Coupler inserts, made from forged parts for heavy duty conditions
- Fixed and adjustable coupler inserts
- 80mm ball & guide, piton-fix and pin type coupler connections
- Drawbars
- Towing ball cups and ring eyes
- Mounting plates
- Large range of accessories and spare parts available

**SABRE AG FRONT TRACTOR ATTACHMENT SYSTEMS**

Complete Front Tractor Attachment Systems to enable more functionality from your tractor. Combined with a rear attachment system makes your tractor more efficient and saves fuel as well as less compaction of the land.

- Complete front attachment system kits to suit a variety of makes and models
- Hydraulic and manual options available
- Can be supplied with or without a PTO

Front linkage attachment systems to suit Case IH, Steyr, Claas, John Deere, Kubota, Massey Ferguson, New Holland, Renault Valtra and Zetor.



SABRE AG TRACTOR LINKAGE & MOUNTING ACCESSORIES

Linkage and mounting accessories to connect your implement to your tractor attachment systems.

- Top links
- Ratchet arm
- Top and lower link implement pins
- Drawbar hitch pins
- Safety lock hitch pins
- Linch pins
- 'R' Clips
- Conversion bushes
- Tow balls
- Merchandise stands are available on request



SABRE AG BALER EMERGENCY RELEASE SYSTEM

The Emergency Release System is designed to minimize the risk of fire spreading from your Baler to your Tractor!

- Safe operation in case of a fire spreading from baler
- Disconnection of baler from the safety of your tractor cab
- Re-usable after each disconnection
- 80mm ball coupling as standard (optional ring eye available if required)
- Available for most square balers

Available to suit Case, Claas, Fendt, Krone, Kuhn, Massey Ferguson and New Holland balers.



SABRE AG VERTICAL HITCH FOR TELEHANDLERS

The Telehandler Vertical Hitch is designed to maximise productivity of your telehandler machine!

- Hydraulic lift off attachment
- Hitch is operated from the safety of the cabin
- Sensor monitoring device can be added to the Vertical Hitch
- Patented locking system for safety, easy operation and maintenance
- Suitable for Claas Scorpion, Liebherr & JCB with different wheel sizes
- Available in Manual or Hydraulic options

NOTES

NOTES

Anytime. Anywhere.

Always Here.™

C10-005 7/22



MOTION

Australia

1300 211 954
MotionAus.com



Find Your
Local Branch