

SRB SOLID-BLOCK HOUSED UNITS

SN-STYLE



///iMOTION
Australia

PRE ASSEMBLED UNITS. NO SET-UP REQUIRED.

Double row spherical roller bearing accepts misalignment

Optional screw on external seal covers

2-bolt pillow block

Machined feet for one-time shaft alignment and easy replacement



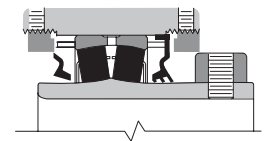
Purge relief valve utilised for Triple Labyrinth (T) Seal Units

J7 Housing Fit – Minimise outer ring rotation in service

Housings manufactured from 75,000 psi tensile cast steel

Integral seals run on extended inner ring not on the shaft providing a perfect seal and no shaft wear

Easily converted to fixed or expansion in the field



BUILT TO OUTLAST AND OUTPERFORM

Today's industrial operations depend on housed unit bearings to keep things moving – particularly in demanding conditions and highly contaminated environments.

When your equipment faces harsh environments, you need roller bearing housed units rugged enough to outlast tough conditions and deliver exceptional performance.

MORE BENEFITS

- Increased bearing service life
- Extended maintenance intervals
- Lower running temperature
- Lower vibration and noise levels
- Greater throughput of machine
- Improved product quality
- Simplified / faster installation procedures
- No adjustment of bearing clearance for eccentric lock

INTERCHANGES

Our housings will drop into existing bolt centres and base to centre height with no modifications required.

Interchanges with:

- SN / SAF Split Cap Units
- Browning
- Morse
- Dodge
- Link-Belt
- Rexnord
- SKF
- Sealmaster



Timken SRB Solid-Block Housed Units are supplied pre-assembled, so no set up required. Plus no risk of contamination and no feeler gauges required.

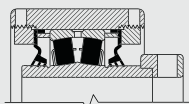


Standard assemblies require precision assembly techniques including using feeler gauges to set the correct bearing radial internal clearance for optimum life. Difficult to do in the field and the high risk of contamination in harsh environments.

TIMKEN SRB SOLID-BLOCK HOUSED UNITS LOCKING CONFIGURATIONS

Perhaps you are replacing an existing bearing and you already know what kind of locking style you need. Or maybe you're looking for a more durable bearing than what you've been using. Either way, you'll be glad Motion Australia offer three locking styles.

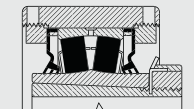
EC SERIES ECCENTRIC LOCK



Eccentric lock

- Heavy-duty
- Increased shaft holding power
- Reduced shaft damage under extreme shock load
- Designed not to release in reversing applications

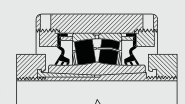
TA/DV SERIES TAPERED ADAPTER LOCK



Tapered Adaptor Lock

- Extra heavy-duty
- 360 degrees shaft holding
- Accommodates undersized shafting

V-LOCK SERIES DOUBLE TAPER LOCK (U.S. PAT. NO. 7344313)



V-Lock®

- Extreme heavy-duty
- 360 degrees shaft holding
- Designed to eliminate over-tightening
- Mechanical withdrawal for easier removal
- Larger bearings and higher load rating Compared to competitive products having same bore size

SEAL & COVER OPTIONS

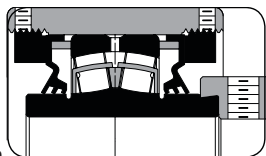
An ineffective seal can quickly ruin any bearing and suddenly increase the total cost and inconvenience of your purchase. Think of seals as inexpensive insurance to protect your bearing investment. Recognising the importance of well designed seals, there are several seal choices available.

PRIMARY SEALS

Primary seals are installed between the inner ring of the bearing and the housing. They are held securely in place by the external housing nut. Primary seals are either contacting or non-contacting, purging or non-purging and are available in material compounds suitable for a variety of applications.

TRIPLE-LIP SEALS – CONTACTING, SELF-PURGING, LOW TO MODERATE SPEEDS¹

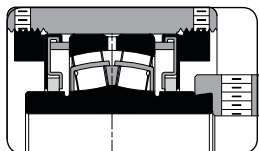
O Seal – This seal offers superior sealing in moist and dirty applications. Made of high-strength urethane for superior abrasion resistance. The seal provides excellent lubrication retention whilst allowing excess grease to purge from the bearing cavity.



(1) Temperature limit -40° C to 121° C continuous, 149° C intermittent. Constant seal-lip pressure on the inner ring results in higher operating temperatures of the complete unit.

LABYRINTH SEALS – NON-CONTACTING, NON-PURGING, ALL SPEEDS²

T Seal – This seal consists of a Teflon ring pressed onto the inner ring of the bearing. This Teflon ring floats between two pieces of formed steel. The seal was developed for high speed applications involving dirty conditions or moisture effected areas. Teflon sustains high temperatures up to 260° C and is impervious to most chemicals. When using this seal, the housing comes with a relief valve.



(2) Relief valve is standard.

- Triple lip: nitrile rubber (M) and urethane (O)
- High-speed labyrinth Teflon (T)
- Closed end covers (Steel)
- Open end covers (Steel)



SECONDARY SEALS

In many circumstances bearings fail due to premature seal failure. This is usually the result of a tough operating environment or over lubrication. A secondary sealing cover has been developed that offers an extra sealing barrier and protection to the primary seal. These economical covers are easily outfitted on any Timken SRB Solid-Block Housed Units. They are ordered as separate parts and are not shown in the bearing part number.

CLOSED END COVERS



OPENED COVERS



TIMKEN SRB SOLID-BLOCK HOUSED UNITS HOUSING STYLES

Choose the housing configuration that fits your need. For your convenience, Timken SRB Solid-Block Housed Units offers interchange solutions for hundreds of other housed units that simply don't offer the strength of these Timken solid-block designs.

- Two-Bolt Pillow Block
- Four-Bolt Pillow Block
- Flange Block

- Piloted-Flange Cartridges
- Take-Up Block
- Cartridge Block



SPHERICAL ROLLER BEARING SOLID-BLOCK HOUSED UNIT NOMENCLATURE

LOCKING STYLE

QM – eccentric lock
QVV – V-Lock, double-nut
TA – tapered adapter lock (extreme-duty block)

HOUSING STYLE

PN – SN-style two-bolt pillow block
SN – SN-style two-bolt pillow block

BEARING INSERT BORE SERIES

222XX (i.e., 13 = 22213)

BEARING INSERT LOCKING TYPE

J – EC series
V – V-Lock series
K – TA/DV series

SHAFT DIAMETER

In inch (i.e., 208 = 2 1/2 in.) and metric (i.e., 050 = 50 mm) sizes

CAST-STEEL HOUSING

SEAL TYPE

O – O seal (triple-lip urethane)
T – T seal (Teflon labyrinth)

STEEL COVER NOMENCLATURE

LOCKING STYLE

CJ – eccentric lock
CV – V-Lock
CK – tapered adapter lock

BEARING INSERT SERIES

222XX (i.e., 13 = 22213)

SEAL TYPE

T seal only

SHAFT SIZE

In inch (i.e., 208 = 2 1/2 in.) and metric (i.e., 050 = 50 mm) sizes

STEEL COVER

CLOSED-END STEEL COVER

BEARING INSERT SERIES

222XX (i.e., 13 = 22213)

STEEL COVER

QM

SN

13

J

208

S

O

CJ

13

T

065

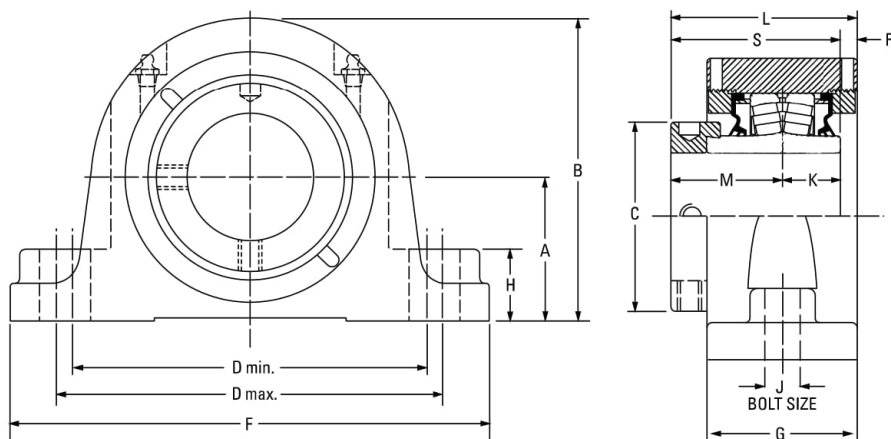
S

CS

13

STEEL

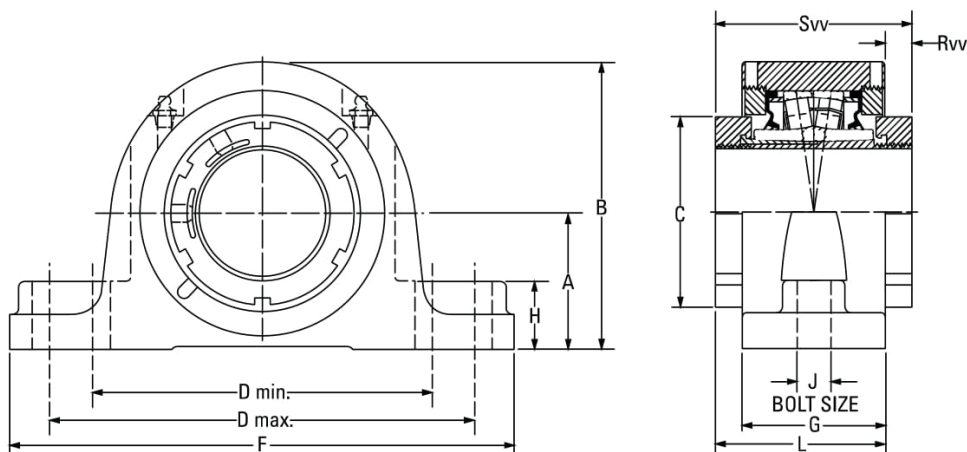
QMSN SN-STYLE TWO-BOLT PILLOW BLOCKS - PURE METRIC DESIGN



BEARING PART NO.	SHAFT DIA.	BEARING NO.	A	B	C	D min.	D max.	F	G	H	J	K	L	M	R	S	Wt.
			MM	MM	MM	MM	MM	MM	MM	MM	MM	MM	MM	MM	MM	MM	KG
QMSN09J040S	40 mm	22209	60	111	67	159	175	205	62	35	12	25	79	48	6	73	10.5
QMSN09J111S	1 11/16 in.																
QMSN09J112S	1 3/4 in.																
QMSN09J045S	45 mm																
QMSN10J115S	1 15/16 in.	22210	70	136	70	183	216	254	68	25	16	25	82	48	9	73	12.7
QMSN10J200S	2 in.																
QMSN10J050S	50 mm																
QMSN11J203S	2 3/16 in.	22211	70	141	76	183	216	254	68	25	16	29	85	51	6	80	13.2
QMSN11J204S	2 1/4 in.																
QMSN11J055S	55 mm																
QMSN13J060S	60 mm																
QMSN13J207S	2 7/16 in.	22213	80	157	92	196	235	275	74	35	16	31	91	55	5	86	15.9
QMSN13J208S	2 1/2 in.																
QMSN13J065S	65 mm																
QMSN15J211S	2 11/16 in.	2215	95	183	102	241	279	316	76	34	20	32	98	60	6	92	20.9
QMSN15J212S	2 3/4 in.																
QMSN15J070S	70 mm																
QMSN15J215S	2 15/16 in.																
QMSN15J300S	3 in.																
QMSN15J075S	75 mm																
QMSN18J303S	80 mm	2218	100	200	121	279	292	345	86	39	20	37	109	66	7	103	25.5
QMSN18J304S	3 3/16 in.																
QMSN18J080S	3 1/4 in.																
QMSN18J085S	85 mm	2218	112	212	121	279	292	345	86	39	20	37	109	66	7	103	25.5
QMSN18J307S	3 7/16 in.	2218	112	212	121	290	327	380	86	39	24	37	109	66	7	103	25.5
QMSN18J308S	3 1/2 in.																
QMSN18J090S	90 mm																
QMSN20J311S	3 11/16 in.	22220	125	241	152	319	366	410	101	50	24	41	126	75	9	116	35.9
QMSN20J312S	3 3/4 in.																
QMSN20J100S	100 mm																
QMSN20J315S	3 15/16 in.																
QMSN20J400S	4 in.																

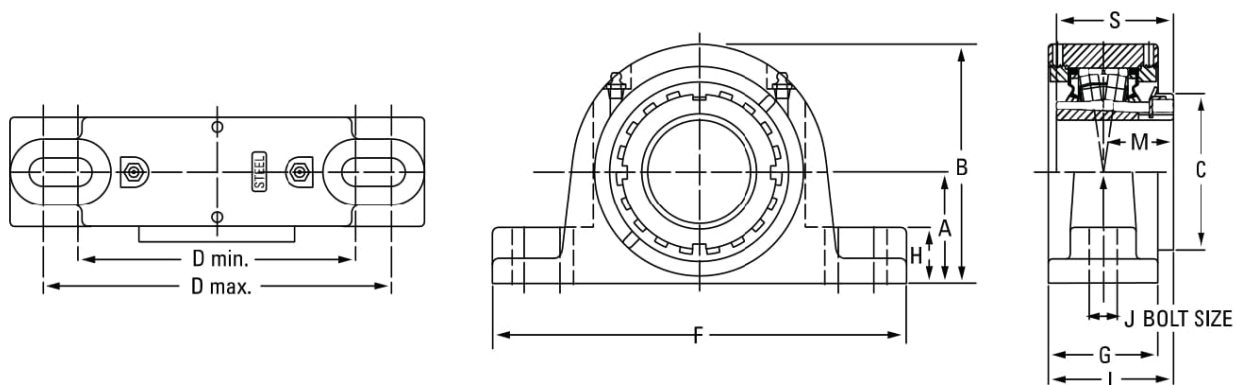
3D CAD and 2D drawings are available at <http://ead.timken.com/category/koller-bearing-solid-block-housed-units-2>

QVVSN SN-STYLE TWO-BOLT PILLOW BLOCKS - PURE METRIC DESIGN



BEARING PART NO.	SHAFT SIZE	BEARING NO.	A	B	C	D min.	D max.	F	G	H	J	L	Rvv	Svv	Wt.
			MM	MM	MM	MM	MM	MM	MM	MM	MM	MM	MM	MM	KG
QVVSN11V115S	1 15/16 in.	22211	70	136	76	183	216	254	68	25	16	85	17	102	8.4
QVVSN11V200S	2 in.														
QVVSN11V050S	50 mm														
QVVSN12V203S	2 3/16 in.	22212	70	141	80	183	216	254	68	25	16	85	17	102	13.2
QVVSN12V204S	2 1/4 in.														
QVVSN12V055S	55 mm														
QVVSN14V060S	60 mm	22214	80	157	94	196	235	275	74	35	16	89	15	104	16.8
QVVSN14V207S	2 7/16 in.														
QVVSN14V208S	2 1/2 in.														
QVVSN14V065S	65 mm														
QVVSN16V211S	2 11/16 in.	22216	95	183	106	241	279	316	76	34	20	91	15	106	20.9
QVVSN16V212S	2 3/4 in.														
QVVSN16V070S	70 mm														
QVVSN16V215S	2 15/16 in.														
QVVSN16V300S	3 in.														
QVVSN16V075S	75 mm														
QVVSN19V303S	3 3/16 in.	22219	100	200	124	279	292	345	86	39	20	102	16	118	25.4
QVVSN19V304S	3 1/4 in.														
QVVSN19V080S	80 mm														
QVVSN19V085S	85 mm	22219	112	212	124	279	292	345	86	39	20	102	16	118	25.4
QVVSN19V307S	3 7/16 in.	22219	112	212	124	290	327	380	86	39	24	102	16	118	25.4
QVVSN19V308S	3 1/2 in.														
QVVSN19V090S	90 mm														
QVVSN22V311S	3 11/16 in.	22222	125	241	140	319	366	410	101	50	24	116	15	130	35.8
QVVSN22V312S	3 3/4 in.														
QVVSN22V100S	100 mm														
QVVSN22V315S	3 15/16 in.														
QVVSN22V400S	4 in.														

TAPN SN-STYLE TWO-BOLT PILLOW BLOCKS

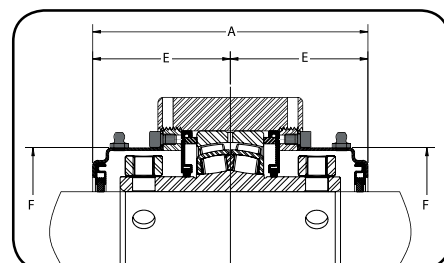


BEARING PART NO.	SHAFT DIA.	BEARING NO.	A	B	C	D min.	D max.	F	G	H	J	L	M	S	Wt.
			MM	MM	MM	MM	MM	MM	MM	MM	MM	MM	MM	MM	KG
TAPN09K107S	1 7/6 in.	22209	60.0	108.0	65.0	158.8	177.8	209.6	53.3	29.0	12	57.4	30.7	50.3	4.5
TAPN09K108S	1 1/2 in.														
TAPN09K040S	40 mm														
TAPN10K111S	1 11/16 in.	22210	60.0	120.1	70.1	165.1	177.8	209.6	54.9	28.2	12	61.0	33.5	55.1	5.9
TAPN10K112S	1 3/4 in.														
TAPN10K045S	45 mm														
TAPN11K115S	1 15/16 in.	22211	69.9	135.4	74.9	165.1	221.0	251.0	60.5	31.8	16	65.8	35.6	58.9	7.7
TAPN11K200S	50 mm														
TAPN11K050S	2 in.														
TAPN12K055S	55 mm	22212	70.0	140.5	79.8	177.8	219.2	254.0	60.5	31.8	16	67.6	37.6	62.0	9.1
TAPN13K203S	2 3/16 in.	2213	80.0	154.9	85.1	182.9	241.3	269.5	68.6	35.1	16	73.9	39.6	65.0	10.4
TAPN13K204S	2 1/4 in.														
TAPN13K060S	60 mm														
TAPN15K207S	2 7/16 in.	22215	80.0	160.8	98.0	200.2	244.6	276.4	68.6	29.2	16	78.2	43.9	72.9	12.2
TAPN15K208S	2 1/2 in.														
TAPN15K065S	65 mm														
TAPN16K211S	2 11/16 in.	22216	95.0	180.3	104.6	235.0	266.7	315.0	72.6	31.8	20	83.8	47.5	78.0	13.6
TAPN16K212S	2 3/4 in.														
TAPN16K070S	70 mm														
TAPN17K215S	2 15/16 in.	22217	95.3	185.9	110.0	241.3	279.4	320.8	76.2	33.8	20	88.1	49.8	82.0	15.0
TAPN17K300S	3 in.														
TAPN17K075S	75 mm														
TAPN18K080S	80 mm	22218	100.0	195.3	119.6	285.8	295.4	346.2	79.8	38.9	20	91.7	52.1	86.1	22.2
TAPN18K303S	3 3/16 in.														
TAPN18K304S	3 1/4 in.														
TAPN19K085S	85 mm	22219	112.0	212.3	124.7	285.8	295.4	346.2	82.8	38.9	20	96.0	54.6	89.9	23.1
TAPN20K307S	3 7/16 in.	22220	112.0	216.9	130.0	276.4	333.5	374.7	86.9	38.9	24	102.4	58.4	97.0	29.5
TAPN20K308S	3 1/2 in.														
TAPN20K090S	90 mm														
TAPN22K315S	3 15/16 in.	22222	125.0	240.5	145.0	317.5	368.3	406.4	100.6	50.8	24	113.5	63.0	104.9	38.1
TAPN22K400S	4 in.														
TAPN22K100S	100 mm														
TAPN24K403S	4 3/16 in.	22224	140.0	262.9	154.4	344.4	355.6	409.7	97.8	50.8	24	116.1	67.1	112.0	49.9
TAPN24K404S	4 1/4 in.														
TAPN24K110S	110 mm														

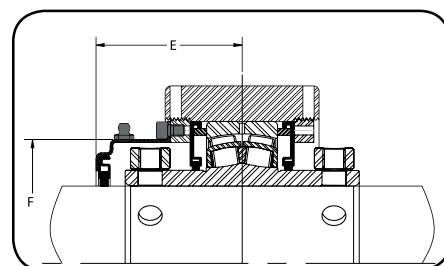
3D CAD and 2D drawings are available at <http://ead.timken.com/category/koller-bearing-solid-block-housed-units-2>

ECCENTRIC LOCK

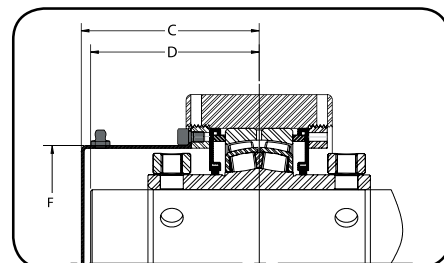
COVER PART NO.	SHAFT DIA.	BEARING NO.	STEEL COVER DIMENSIONS					
			A	B	C	D	E	F
			MM	MM	MM	MM	MM	MM
CS09STEEL	CLOSED	22209	121.7	130.8	69.9	65.8	61.0	74.7
CJ09T040S	40 mm							
CJ09T111S	1 11/16 in.							
CJ09T112S	1 3/4 in.							
CJ09T045S	45 mm							
CS10STEEL	CLOSED	22210	122.7	132.8	73.2	69.1	61.5	79.8
CJ10T115S	1 15/16 in.							
CJ10T050S	50 mm							
CJ10T200S	2 in.							
CS11STEEL	CLOSED	22211	128.5	143.3	79.2	75.2	64.3	89.7
CJ11T055S	55 mm							
CJ11T203S	2 3/16 in.							
CJ11T204S	2 1/4 in.							
CS13STEEL	CLOSED	22213	135.4	159.3	91.4	87.4	67.8	103.6
CJ13T060S	60 mm							
CJ13T207S	2 7/16 in.							
CJ13T208S	2 1/2 in.							
CJ13T065S	65 mm							
CS15STEEL	CLOSED	22215	148.1	165.6	91.4	87.4	74.2	116.1
CJ15T211S	2 11/16 in.							
CJ15T212S	2 3/4 in.							
CJ15T070S	70 mm							
CJ15T215S	2 15/16 in.							
CJ15T075S	75 mm							
CJ15T300S	3 in.							
CS18STEEL	CLOSED	22218	164.8	188.0	105.7	101.6	82.6	139.4
CJ18T080S	80 mm							
CJ18T303S	3 3/16 in.							
CJ18T304S	3 1/4 in.							
CJ18T085S	85 mm							
CJ18T307S	3 7/16 in.							
CJ18T308S	3 1/2 in.							
CJ18T090S	90mm							
CS20STEEL	CLOSED	22220	179.6	202.2	112.5	108.5	89.9	160.3
CJ20T311S	3 11/16 in.							
CJ20T312S	3 3/4 in.							
CJ20T100S	100 mm							
CJ20T315S	3 15/16 in.							
CJ20T400S	4 in.							



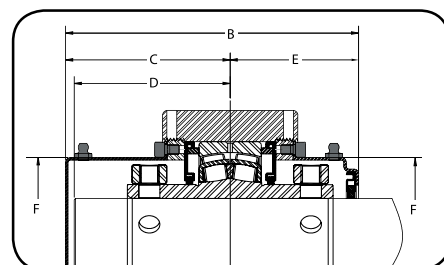
DOUBLE OPEN-END COVER.



SINGLE OPEN-END COVER.



SINGLE CLOSED-END COVER.

SINGLE CLOSED-END COVER
AND SINGLE OPEN-END COVER

STRAIGHT BORE EQUIVALENTS

STEEL COVER DIMENSIONS								
COVER PART NO.	SHAFT DIA.	BEARING NO.	A	B	C	D	E	F
			MM	MM	MM	MM	MM	MM
CS11STEEL	CLOSED	22211	128.5	143.3	79.2	75.2	64.3	89.7
CV11T115S	1 15/16 in.							
CV11T050S	50 mm							
CV11T200S	2 in.							
CS12STEEL	CLOSED	22212	129.0	141.5	77.0	72.9	64.5	98.6
CV12T055S	55 mm							
CV12T203S	2 3/16 in.							
CV12T204S	2 1/4 in.							
CS14STEEL	CLOSED	22214	135.4	159.3	91.4	87.4	67.8	103.6
CV14T060S	60 mm							
CV14T207S	2 7/16 in.							
CV14T208S	2 1/2 in.							
CV14T065S	65 mm	22216	150.1	167.6	92.5	88.4	75.2	116.1
CS16STEEL	CLOSED							
CV16T211S	2 11/16 in.							
CV16T212S	2 3/4 in.							
CV16T070S	70 mm	22219	167.9	191.0	106.9	102.9	84.1	139.4
CV16T215S	2 15/16 in.							
CV16T075S	75 mm							
CV16T300S	3 in.							
CS19STEEL	CLOSED	22222	217.7	241.8	133.1	129.0	109.0	180.1
CV19T080S	80 mm							
CV19T303S	3 3/16 in.							
CV19T304S	3 1/4 in.							
CV19T085S	85 mm	22222	217.7	241.8	133.1	129.0	109.0	180.1
CV19T307S	3 7/16 in.							
CV19T308S	3 1/2 in.							
CV19T090S	90 mm							
CS22STEEL	CLOSED	22222	217.7	241.8	133.1	129.0	109.0	180.1
CV22T311S	3 11/16 in.							
CV22T312S	3 3/4 in.							
CV22T100S	100 mm							
CV22T315S	3 15/16 in.	22222	217.7	241.8	133.1	129.0	109.0	180.1
CV22T400S	4 in.							

TAPERED ADAPTER LOCK

STEEL COVER DIMENSIONS								
COVER PART NO.	SHAFT DIA.	BEARING NO.	A	B	C	D	E	F
			MM	MM	MM	MM	MM	MM
CS09STEEL	CLOSED	22209	118.4	127.5	68.3	64.3	59.2	74.7
CK09T107S	1 7/16 in.							
CK09T108S	1 1/2 in.							
CK09T040S	40 mm							
CS10STEEL	CLOSED	22210	118.4	130.0	70.9	66.8	59.2	79.8
CK10T111S	1 11/16 in.							
CK10T112S	1 3/4 in.							
CK10T045S	45 mm							
CJ10T200S	CLOSED	22211	124.2	139.2	77.0	72.9	62.2	89.7
CK11T115S	1 15/16 in.							
CK11T050S	50 mm							
CK11T200S	2 in.							
CS12STEEL	CLOSED	22212	123.7	136.4	74.4	70.4	62.0	98.6
CK12T055S	55 mm							
CS13STEEL	CLOSED	22213	130.3	154.2	88.9	84.8	65.3	103.6
CK13T203S	2 3/16 in.							
CK13T204S	2 1/4 in.							
CK13T060S	60 mm							
CS15STEEL	CLOSED	22215	142.7	160.3	88.9	84.8	71.4	116.1
CK15T207S	2 7/16 in.							
CK15T208S	2 1/2 in.							
CK15T065S	65 mm							
CS16STEEL	CLOSED	22216	144.8	162.3	89.9	85.9	72.4	116.1
CK16T211S	2 11/16 in.							
CK16T212S	2 3/4 in.							
CK16T070S	70 mm							
CS17STEEL	CLOSED	22217	133.9	156.0	88.9	84.8	67.1	132.1
CK17T215S	2 15/16 in.							
CK17T075S	75 mm							
CK17T300S	3 in.							
CS18STEEL	CLOSED	22218	159.5	182.9	102.9	98.8	79.8	139.4
CK18T080S	80 mm							
CK18T303S	3 3/16 in.							
CK18T304S	3 1/4 in.							
CS19STEEL	CLOSED	22219	162.6	185.7	104.4	100.3	81.3	139.4
CK19T085S	85 mm							
CS20STEEL	CLOSED	22220	170.4	193.0	108.0	103.9	85.3	160.3
CK20T307S	3 7/16 in.							
CK20T308S	3 1/2 in.							
CK20T090S	90 mm							
CS22STEEL	CLOSED	22222	208.5	232.9	128.5	124.5	104.4	180.1
CK22T315S	3 15/16 in.							
CK22T400S	4 in.							
CK22T100S	100 mm							

Anytime. Anywhere.

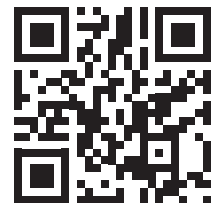
Always Here.™

C10-009 10/22



MOTION
Australia

1300 211 954
MotionAus.com



Find Your
Local Branch