



LOCTITE PC 7218 WEARING COMPOUND

LOCTITE® PC 7218 is a 2-part , ceramic filled , epoxy based protective coating designed to protect equipment from coarse particle erosion and abrasion on metals and ceramic surfaces under dry service temperature of -28°C to 121°C.

Can be used on a wide range of applications in most industries including Mining, Power, Cement, Steel and others

- » Chutes
- » Hoppers
- » Screens
- » Launderers
- » Elbows
- » Transition points



FEATURES

- » Alumina bead, Ceramic based
- » CMR free
- » Faster Curing
- » Non sagging formulation
- » Made in Australia

BENEFITS

- » Outstanding resistance to coarse particle abrasion
- » Sustainable solution and safe to use
- » Reduce downtime
- » Can be applied to vertical and overhead surfaces
- » Locally made for easy availability



Reduce Costs



Increase Efficiency



Increase Reliability



Improve Safety

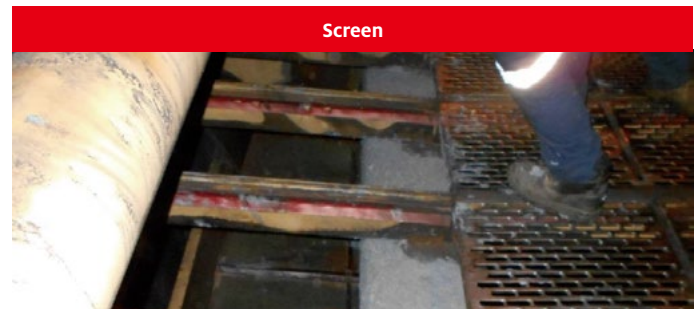
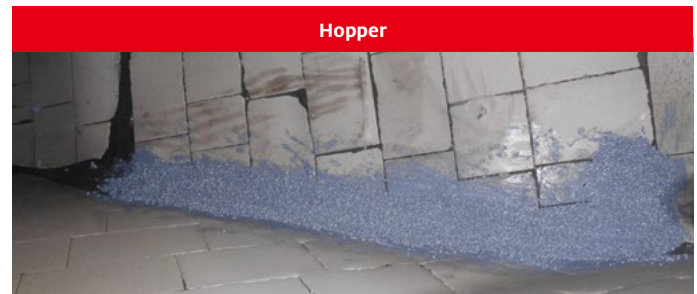


TECHNICAL SPECIFICATIONS

Technology	Epoxy based
Appearance	Grey
Hardness ASTM D 2240	90 Shore D
Temperature resistance	121°C (Dry)
Working time @ 25°C Working time @ 35°C (Estimated)	30 minutes 25 minutes (Estimated)
Cure Time @ 25°C Cure Time @ 35°C (Estimated)	7 hrs. 6 hrs (Estimated)
Mix Ratio	2:1 by volume 2:1 by weight
Coverage @ 6 mm thickness	0.8 m ² per 10 kg kit
DRY ABRASION ASTM G 65	1.27% weight loss
2 Body Abrasion ASTM D 5963	1.62% weight loss
TABER ABRASION ASTM D4060 (CS-17)	0.1157 g/1000 cycles

Please refer to TDS for additional information.

APPLICATION AREAS



NEED IT NOW?

IDH No. 2888813	Pack Size
LOCTITE PC 7218 KT	10KG



Henkel Australia Headquarter

135-141 Canterbury Road
Kilsyth, VIC 3137 Australia

Phone: 1300 856 051

www.henkel-adhesives.com

Henkel New Zealand

2 Allens Road, East Tamaki,
Auckland, New Zealand

Phone: +64-9250-9900